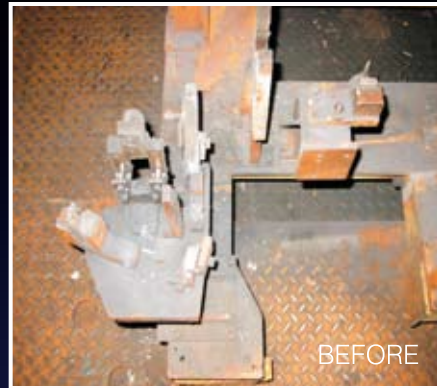


REDUCE CLEANING TIME BY AS MUCH AS 70%

Gloss levels, plastic residues and release agents can be managed quickly with the molds while in the press. Using Cold Jet's non-abrasive blast technology, molders report annual labor and mold-wear savings of approximately \$50,000. Dry ice blasting is faster and more effective than traditional cleaning methods, in part, because it does not generate any secondary waste or leave any residual blasting media to clean up or dispose of. Here are some of the proven applications for Cold Jet Dry Ice Blasting:

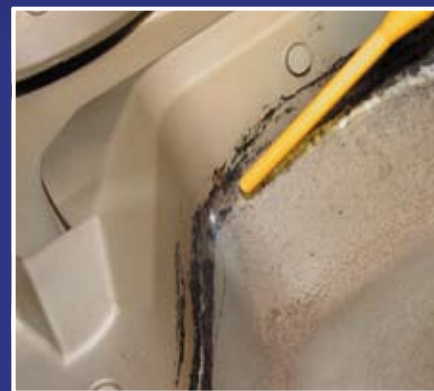
- Core Box
- Permanent Aluminum Mold
- Paint Hook
- Weld Line
- E-coat
- Blow Mold
- Compression Mold
- Injection Mold
- Urethane Mold
- Transmission Housing



Automotive Weld Line cleaning.



See the difference. Transmission housing cleaned with Cold Jet.



The Cold Jet cleaning process cleans hard to reach places easily and effectively.

- Reduce labor cost
- Increase productivity
- No secondary waste stream
- Increased operator safety
- 24/7 Customer Support
- Environmentally safe
- Non-abrasive process
- Reduce scrap

REFERENCES

Join the industry leaders already taking advantage of Cold Jet dry ice blasting systems:

